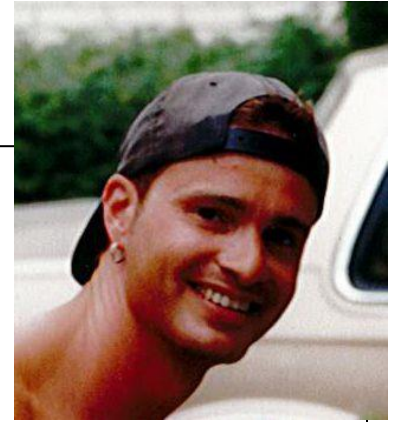


David Aldred, MSc

Western University
daldred2@uwo.ca

Supervisor

Dr. Irena Creed, Western University



Abstract

I build the spatial (GIS and remote sensing) databases for Theme 2 research and monitoring projects and provide technical support and training for the research participants. This includes development of GIS and remote sensing image processing methods and protocols. In addition, I developed and conducted the introductory GIS course for the NSERC CNAES 2nd Annual Meeting & HQP Workshop in May 2014 in Montreal.

Keywords: GIS, remote sensing, data, analysis, training

How does your project link to Canadian aquatic ecosystem services?

I support all Theme 2 research and monitoring projects investigating the effects of disturbances in forest ecosystems on aquatic ecosystem services.